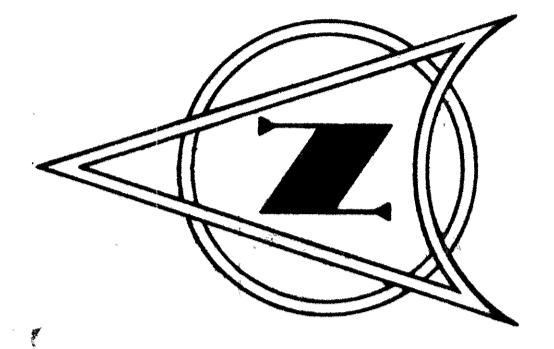


**PLAN
TATOOSH CIRCLE**

NOTE:
Rod Pt. For Islands Are On @ At Sta. 0+68 & 1+18 With Rod Of 4\"/>

* SIGNING RECOMMENDED BY WILSEY & HAM, INC. TO BE APPROVED AND INSTALLED BY SNOHOMISH COUNTY.

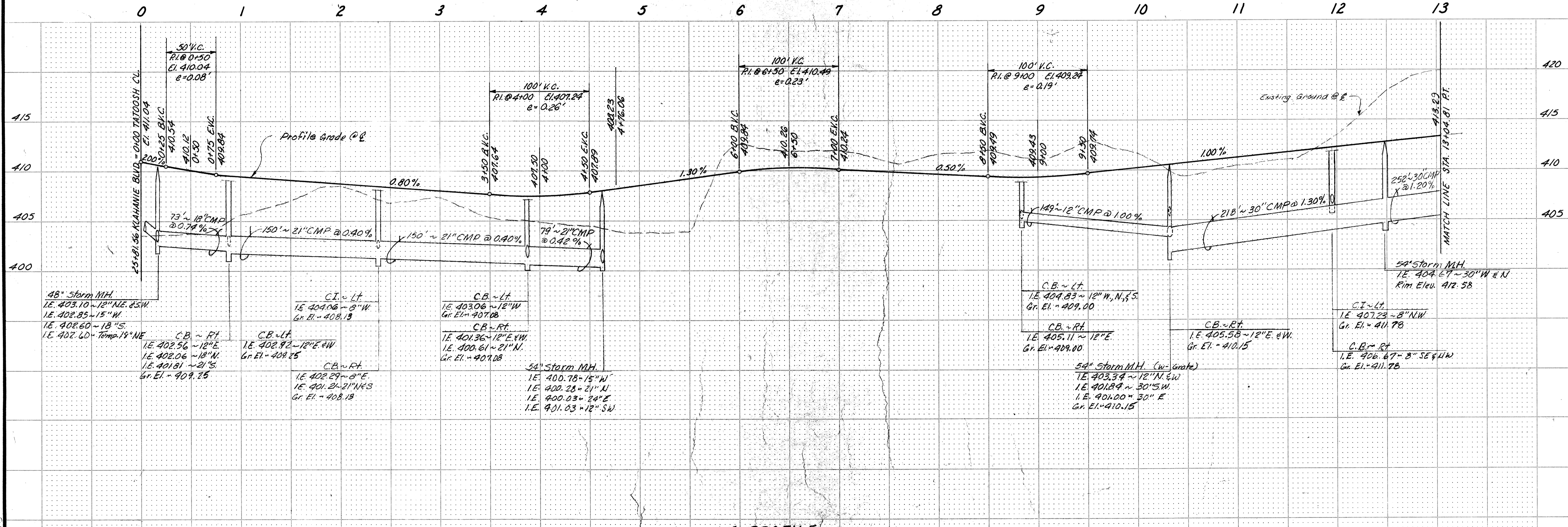


APPROVED FOR CONSTRUCTION BY *Harry D. Wata* 1/31/75
HARRY D. WATA
SNOHOMISH COUNTY ENGINEER



W & H WILSEY & HAM, INC.
ENGINEERING • PLANNING • SURVEYING
Evergreen Bldg. 15 So. Grady Way
Renton, Washington 98055
Telephone (206) 228-1080

KLAHANIE DIVISION I
STREET AND STORM DRAINAGE IMPROVEMENT PLANS
TATOOSH CIRCLE
STA. 0+00 TO STA. 13+04.81



**PROFILE
TATOOSH CIRCLE**

ROAD-352

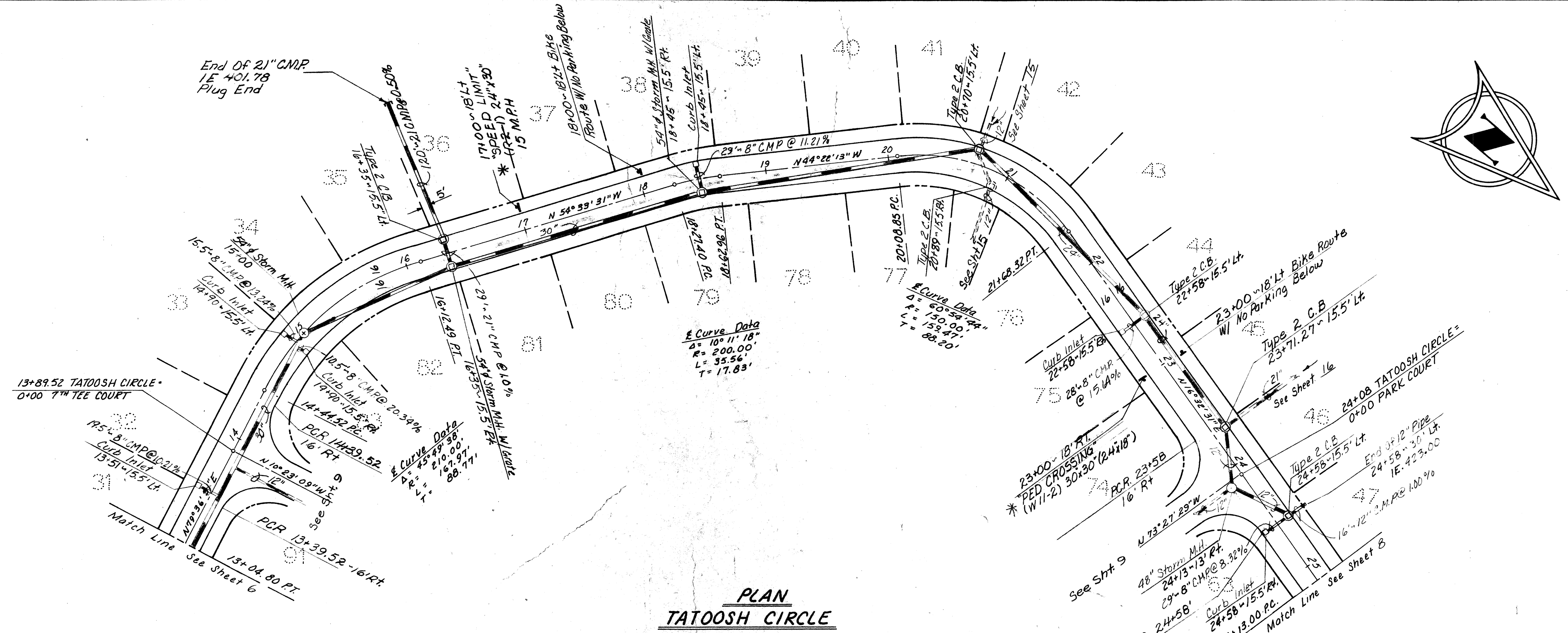
SPRINGTREE

Revisions	By	Date

Date Aug 1974
Scale: Vert. 1"=50'
Designed SJM/JH
Drawn PI
Checked JLH/WG
Approved _____

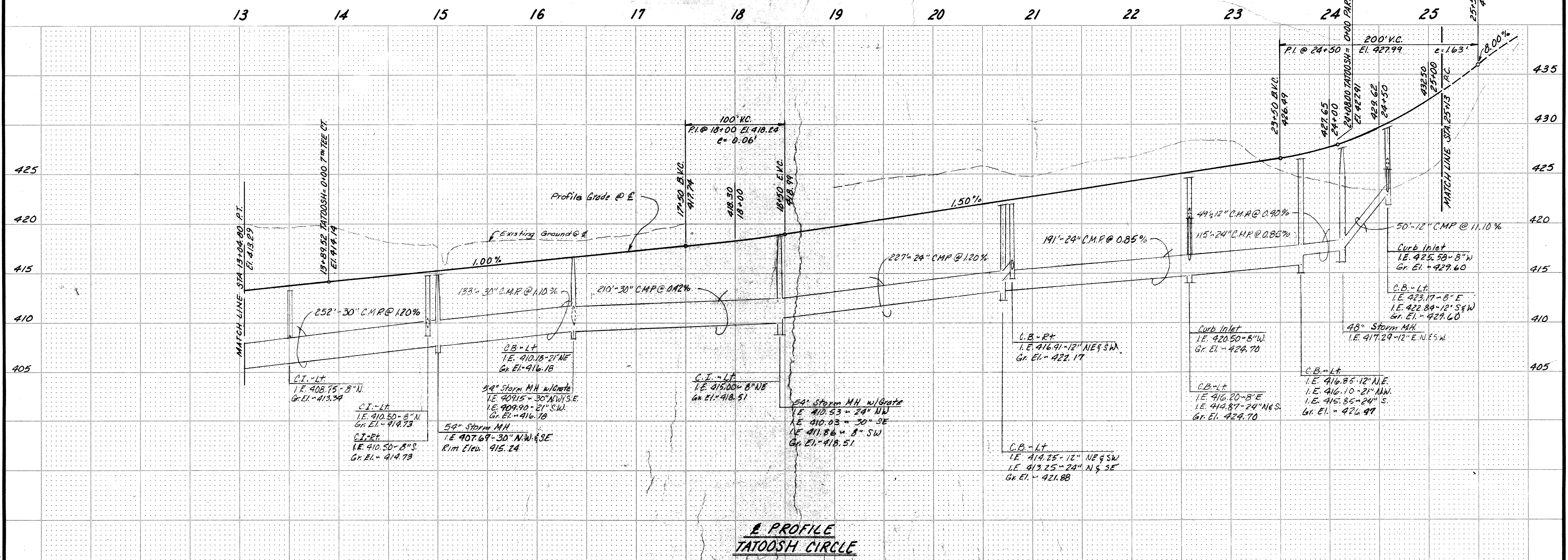
Job Number 3-2092-0602-20
SHEET

6 of 23

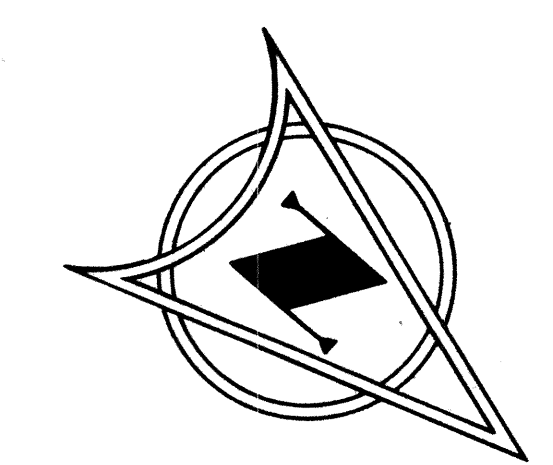


**PLAN
TATOOSH CIRCLE**

* SIGNING RECOMMENDED BY WILSEY & HAM, INC. TO BE APPROVED AND INSTALLED BY SNOHOMISH COUNTY.



**PROFILE
TATOOSH CIRCLE**

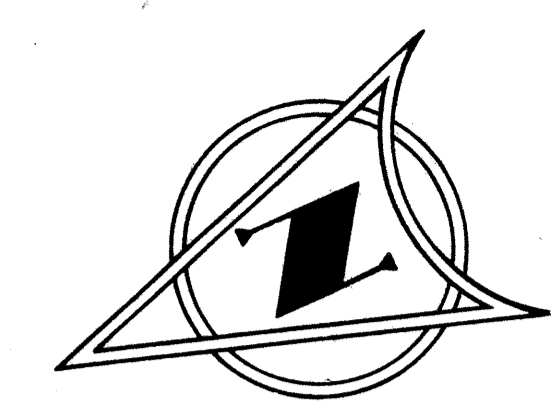
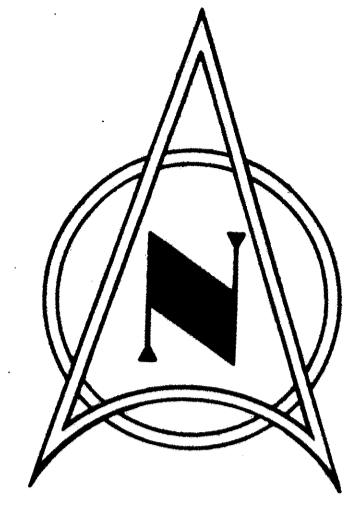


APPROVED FOR CONSTRUCTION BY
Harry D. Martin 1/31/75
HARRY D. MARTIN
SNOHOMISH COUNTY ENGINEER

W & H WILSEY & HAM, INC.
ENGINEERING • PLANNING • SURVEYING
Evergreen Bldg. 15 So. Grady Way
Renton, Washington 98055
Telephone: (206) 228-1080

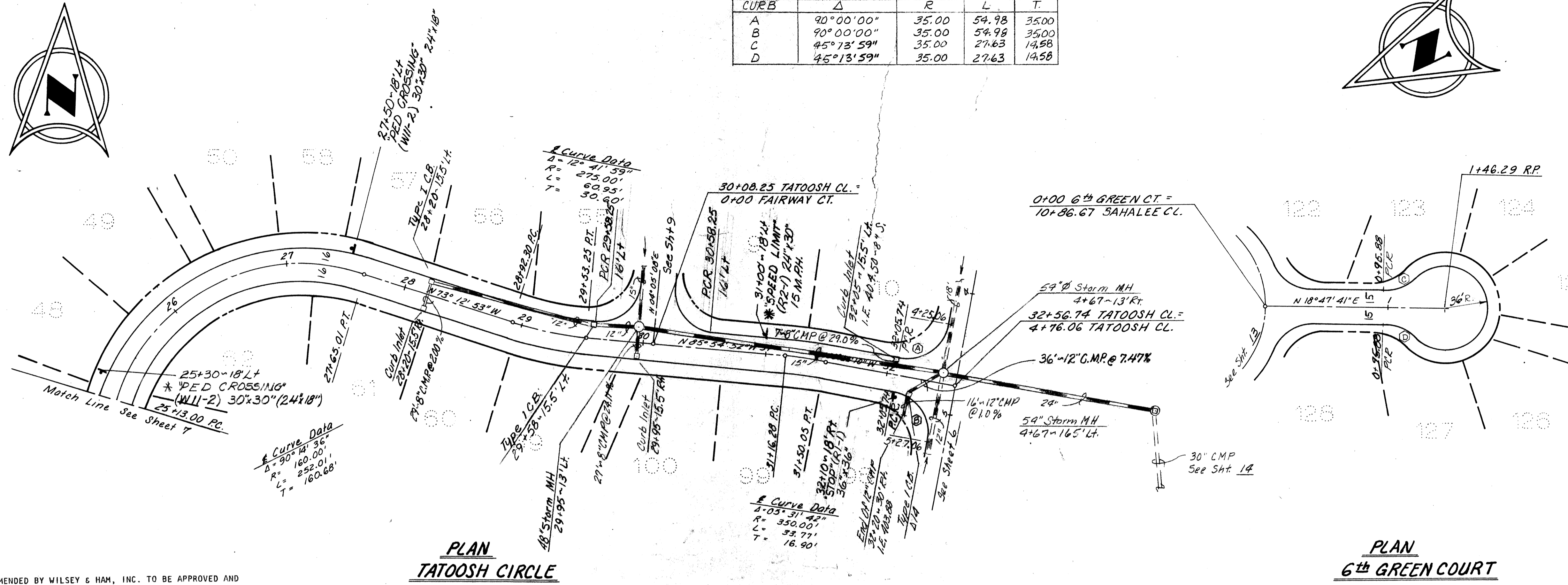
KLAHANIE DIVISION I
STREET AND STORM DRAINAGE IMPROVEMENT PLANS
TATOOSH CIRCLE
STA. 13+04.80 TO STA. 25+50
Snohomish County, Washington

Revisions: _____
By: _____ Date: _____
Date: Aug 1974
Scale: Vert. 1"=5'
Horiz. 1"=50'
Designed: SWM/LJA
Drawn: EL
Checked: JH/HWA
Approved: _____
Job Number: 3-2090-0607-20
SHEET
7 of 23



SEE SHEETS 19 & 20 FOR CURB RETURN ELEVATIONS

CURB RETURN DATA				
CURB	Δ	R	L	T
A	90°00'00"	35.00	54.98	35.00
B	90°00'00"	35.00	54.98	35.00
C	45°13'59"	35.00	27.63	14.58
D	45°13'59"	35.00	27.63	14.58

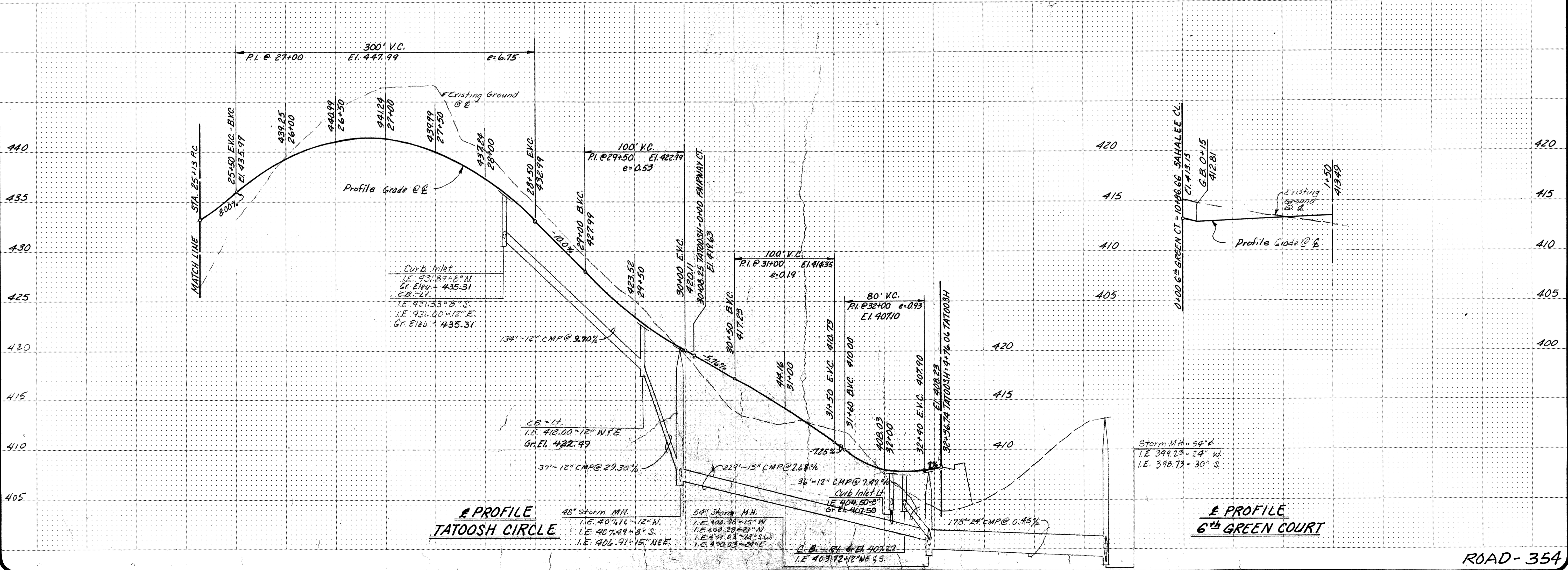


NOTE:
See Sheet 20 For
Curb Elevations of
Cul-De-Sac.

APPROVED FOR
CONSTRUCTION BY *Harry D. Martin* 1/31/75
SIDINGHISH COUNTY ENGINEER
HARRY D. MARTIN

* SIGNING RECOMMENDED BY WILSEY & HAM, INC. TO BE APPROVED AND
INSTALLED BY SNOHOMISH COUNTY.

25 26 27 28 29 30 31 32 33 0 1 2



PROFILE
TATOOSH CIRCLE

PROFILE
6th GREEN COURT

ROAD-354

SPRINGTREE

WH WILSEY & HAM, INC.
ENGINEERING • PLANNING • SURVEYING
Evergreen Bldg. 15 So. Grady Way
Renton, Washington 98055
Telephone (206) 228-1080

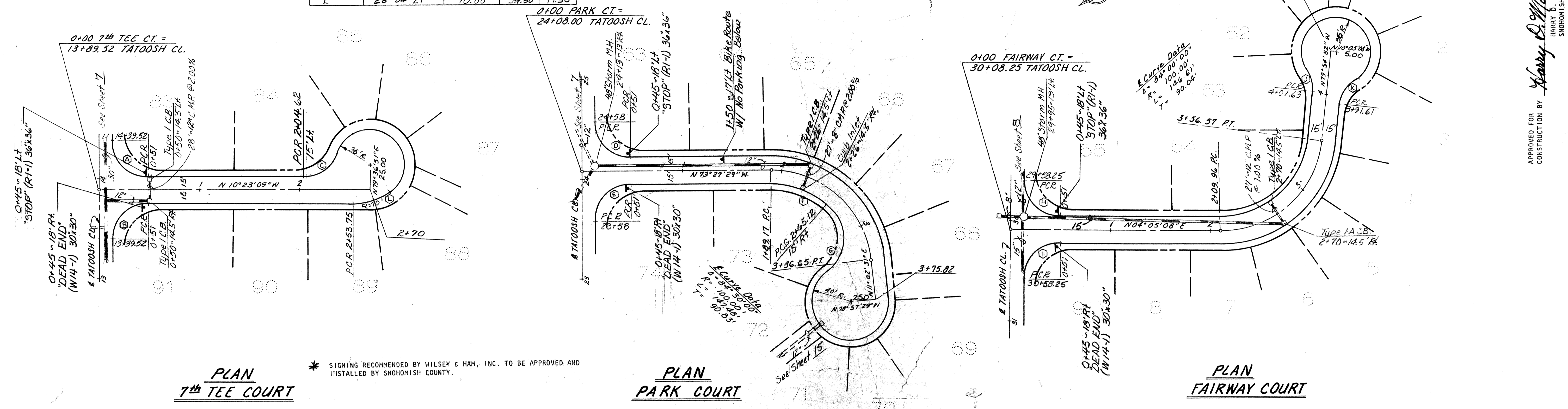
KLAHANIE DIVISION I
STREET AND STORM DRAINAGE IMPROVEMENT PLANS
STA. 25+13 TO STA. 32+86.74
STA. 0+00 TO STA. 1+50
Snohomish County

Revisions
By Date
Date: Aug. 1974
Scale: Vert. 1"=5'
Horiz. 1"=50'
Designed: ALG/LSM
Drawn: PJ
Checked: JH/HWG
Approved:
Job Number: 3-2090-0602-20
SHEET
8 of 23

SEE SHEET 19 FOR CURB RETURN ELEVATIONS

CURB RETURN DATA				
CURB	Δ	R	L	T
A	90°00'00"	35.00	54.98	35.00
B	90°00'00"	35.00	54.98	35.00
C	69°04'31"	35.00	42.20	24.09
D	90°00'00"	35.00	54.98	35.00
E	90°00'00"	35.00	54.98	35.00
F	43°31'07"	85.00	69.56	33.93
G	100°07'37"	40.00	69.90	47.78
H	90°00'00"	35.00	54.98	35.00
I	90°00'00"	35.00	54.98	35.00
J	39°13'37"	35.00	23.96	12.47
K	50°40'07"	35.00	30.95	16.57
L	28°04'21"	70.00	34.30	17.50

NOTE:
See Sheet 20 For
Curb Elevations For
Cut-De-Sac.

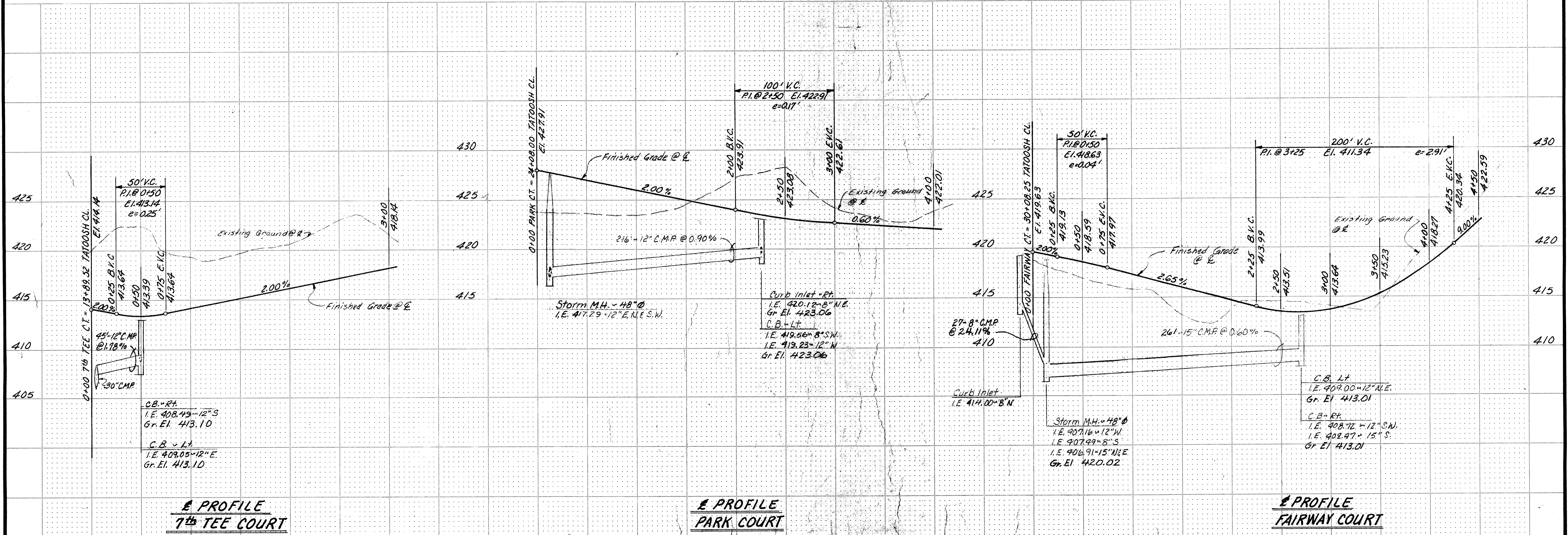


PLAN
7th TEE COURT

PLAN
PARK COURT

PLAN
FAIRWAY COURT

* SIGNING RECOMMENDED BY WILSEY & HAM, INC. TO BE APPROVED AND
INSTALLED BY SNOHOMISH COUNTY.



PROFILE
7th TEE COURT

PROFILE
PARK COURT

PROFILE
FAIRWAY COURT

ROAD-355

SPRINGTREE

APPROVED FOR
CONSTRUCTION BY
Harry B. Martin 1/31/75
HARRY B. MARTIN
SNOHOMISH COUNTY ENGINEER

WH WILSEY & HAM, INC.
ENGINEERING • PLANNING • SURVEYING
Evergreen Bldg. 15 So. Grady Way
Renton, Washington 98055
Telephone (206) 228-1080

KLAHANIE DIVISION I
STREET AND STORM DRAINAGE IMPROVEMENT PLANS
7th TEE COURT STA. 0+00 TO STA. 3+00
PARK COURT STA. 0+00 TO STA. 4+00
FAIRWAY COURT STA. 0+00 TO STA. 4+00
Snohomish County

Revisions
By Date
Date Aug 1974
Scale: Vert. 1"=5'
Horiz. 1"=50'
Designed SNM/HWG
Drawn PJ
Checked JH/HWG
Approved
Job Number 2-2090-0602-20
SHEET
9 of 23